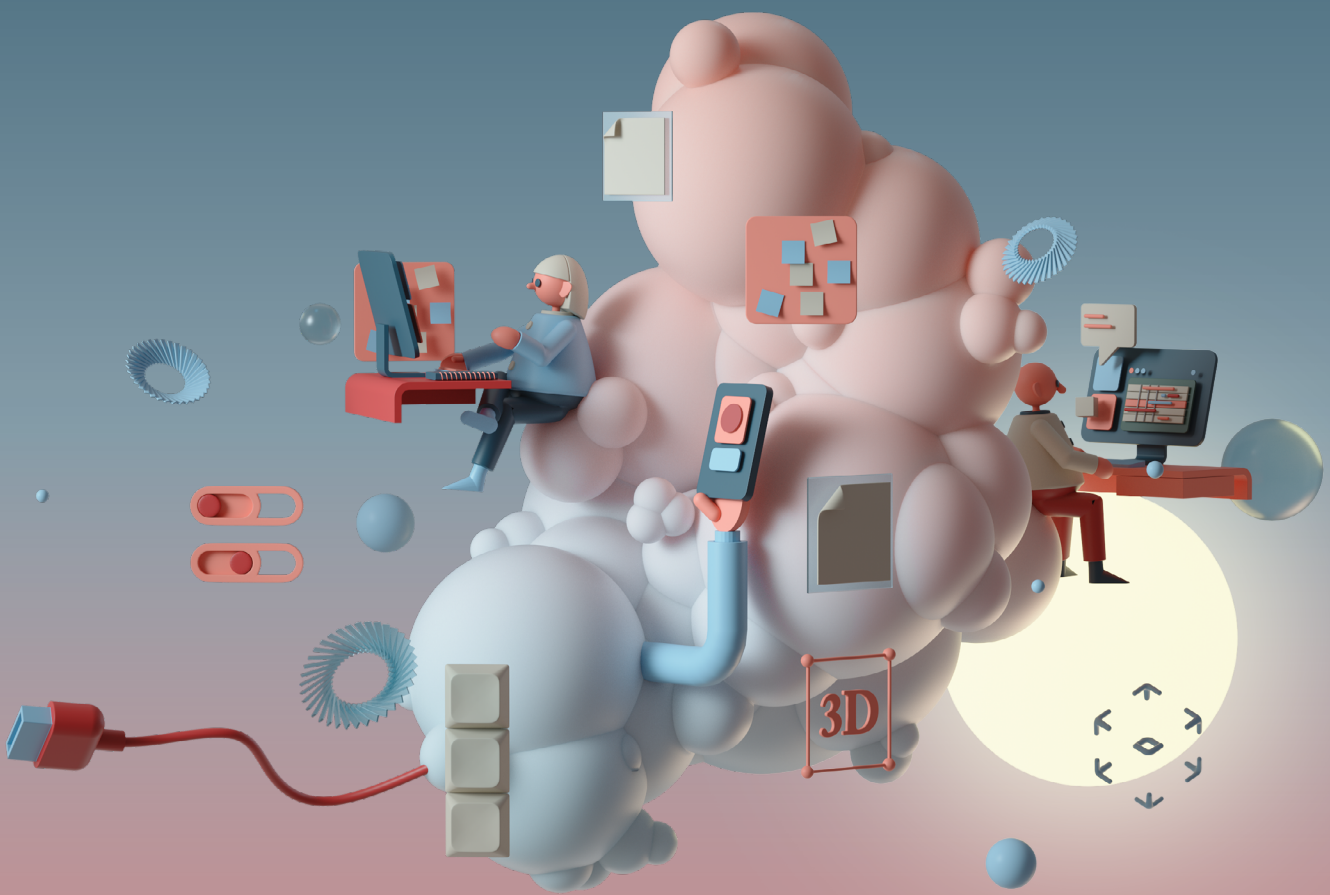


Pearl S/4 Move - Join the wave!



A fast and reliable journey to your
next level of SAP applications

Join Pearl S/4 Move

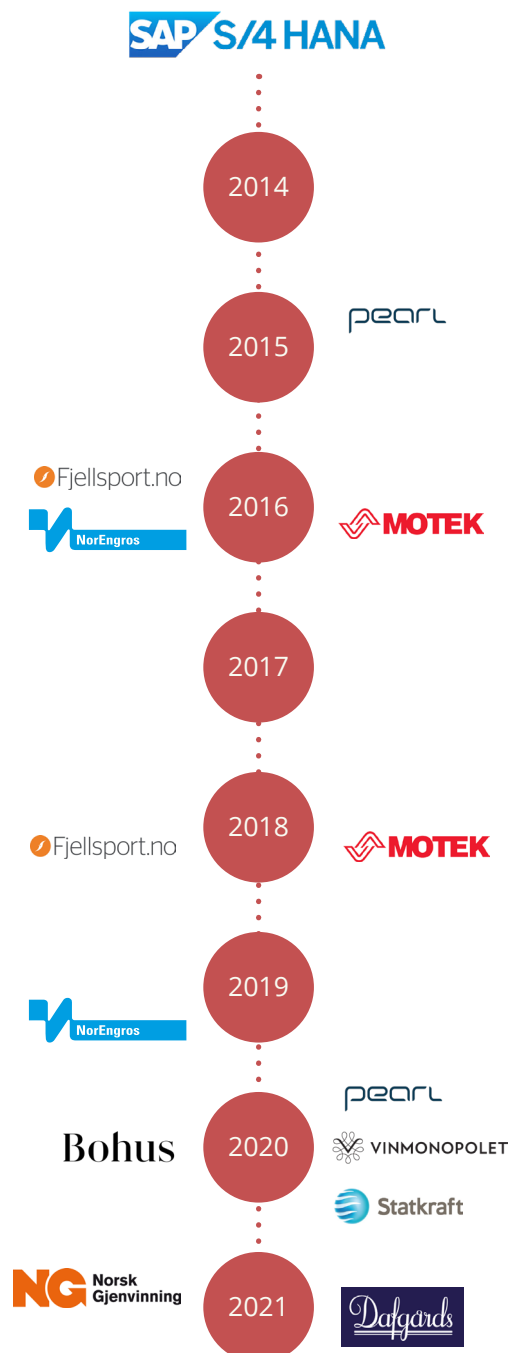
Wherever you are in the decision-making process,
you fit into Pearl's Move Wave

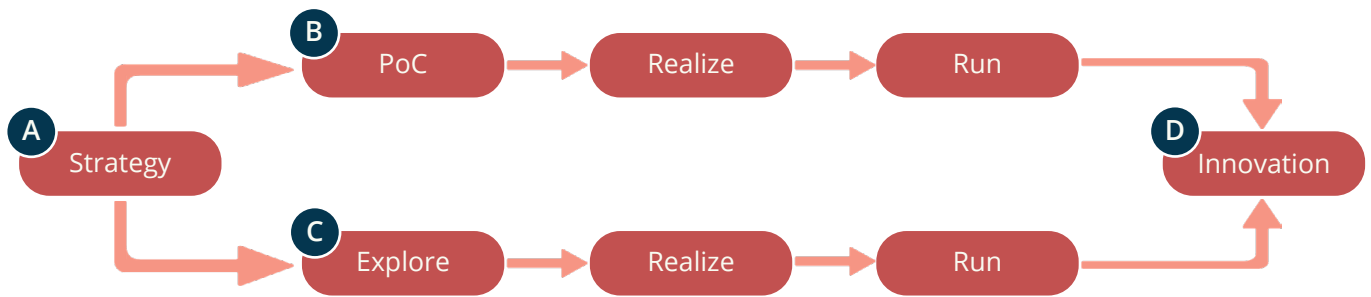
Pearl S/4 Move – Using local expertise and Pearl's entire delivery structure, our goal is to help customers move to the new SAP platform efficiently and securely.

Once the move is complete, the *PearlCare InnovationLab* will have innovation workshops ready, which your business team can attend. This way, we can together extract the latent winnings in SAP S/4HANA.

Package solution – Pearl has a *package solution* approved by SAP which is the basis for our *Move Wave*, and we only use SAP-approved tools in the implementation. We have gained solid experience and have helped several customers to SAP S/4HANA already.

Throughout the Move process, you will have a project manager who follows you and ensures that the relevant delivery teams are involved at the right time and with the right expertise. On the next page, we have described four scenarios for how we best can help your business, depending on where you are in the *Move Wave*.





Pearl S/4 Move Wave

- A You know that the company's SAP ECC solution must be moved to SAP S/4HANA by the support deadline, but you have not made a roadmap for when and how it will happen.**

If so, Pearl can help you get started. We have a finished concept where you choose what considerations are important for your move process. Join us from the start of the *Move Wave*, and we will guide you through the entire journey to a fully migrated solution. After the strategic decision is made, the road will continue either via B or C in Pearl's *Move Wave*.

- B You have decided that a technical migration to SAP S/4HANA is right for you, and you need a partner to ensure an efficient move.**

Start in the *Move Wave* at point B, "Proof of Concept" (PoC). The Proof of Concept is a full migration done in a sandbox environment. By harvesting the experience from the sandbox migration, we can make decisions in the early phase, which ultimately will help reduce the time and risk of migrating the production line.

- C You have decided that SAP S/4HANA is the right solution, but you need a new implementation to succeed with the business strategy.**

Start the *Move Wave* at point C, "Explore". During the Explore phase, a fit-to-standard analysis is performed based on the customer requirements and [Pearl's template solutions](#). Each business process is detailed, and decisions are made regarding the functionality needed. The process walkthroughs can be supported by system demos to uncover gaps. If a requirement is not covered by the template, the gap is documented, and the cost to fill the gap is estimated. The customer will then be able to decide if this should be included in the total scope of the solution. In addition to the process requirements, interfaces and conversions are also covered in the "Explore" phase.

- D You have moved to SAP S/4HANA, but you've not yet realized all the potential benefits.**

[PearlCare InnovationLab](#) has predefined workshops for different subject areas, that can also be adjusted to your specific needs. The workshops will reveal opportunities and result in proposals for agile innovation projects that can be implemented according to a cohesive plan – adapted to the company's requirements.